

# meru

## PC Adapter

The Moozi and Switch  
to PC adapter by

**meru**  
disabilities to possibilities



## Overview:

The MERU PC Adapter converts switched inputs from a variety of sources to mouse and keyboard functions on a PC.

For example you can:

- Connect a Moozi, which allows for directional mouse controls.
- Connect up to 2 wired 3.5 mono jack switches.
- Connect up to 18 MERU wireless Switch.

Moozi, wired and wireless switches are sold separately.

MERU PC adapter is made in partnership with Prosys Dev Ltd.

## In The Box:



**Adaptor**

Connect to the PC  
using the USB cable



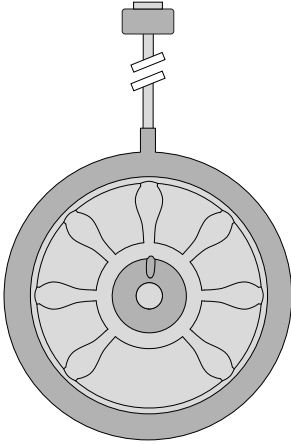
**USB Cable**



**USB Software**

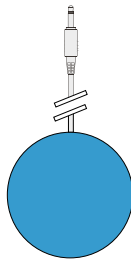
Only required to  
customise your adaptor

## Compatible with:



**Moozi**

Controls direction  
1 per device



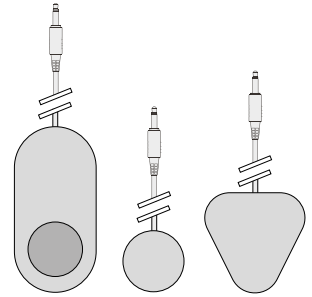
**Meru Wired  
Switch**

2 per adaptor\*



**MERU Wireless  
Switch**

18 per adaptor



**Any 3.5mm mono  
Switch**

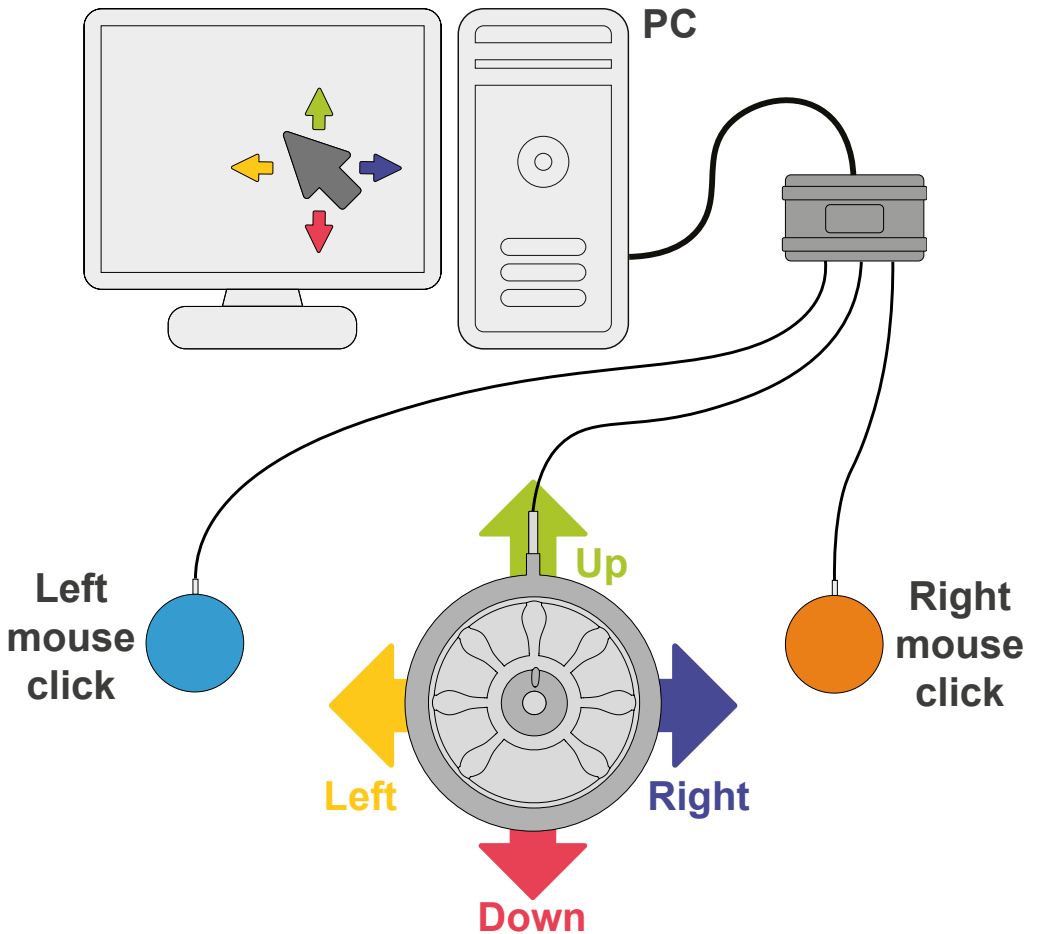
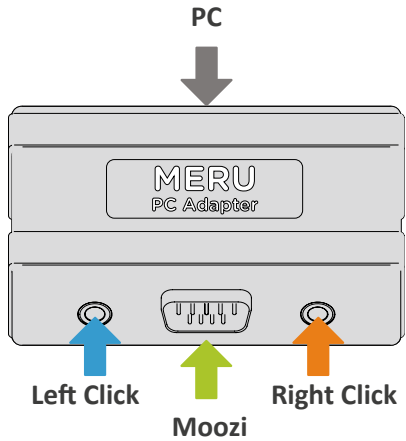
2 per adaptor\*

\*There is two total 3.5mm mono sockets per adaptor

## Quick Start Guide:

Just plug your moozi adapter into a computer and start using!

- Switch 1 - Left Click
- Switch 2 - Right Click
- Moozi - Direction
- USB Cable - To PC

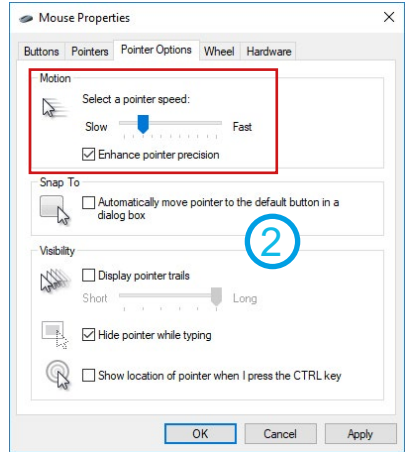


## Adjust Pointer Speed:

Windows controls the speed of the mouse pointer.

Slower is often best

- 1 Navigate to mouse properties (either search windows search for 'pointer speed' or Select 'Mouse' in control panel).
- 2 Adjust 'Motion' or 'Cursor speed' to vary the speed.



## Mouse

Select your primary button

Left ▾

Cursor speed



## Advanced features:

To setup wireless switches or assign different functions to your MERU PC Adapter, the software on the USB stick will need to be used.

The software is only used to change the settings of the Moozi PC Adapter. Once changed, the Moozi PC Adapter will remember the settings on other computers.

## Install Software:

Run the 'setup' application from the USB stick, or download it from our website

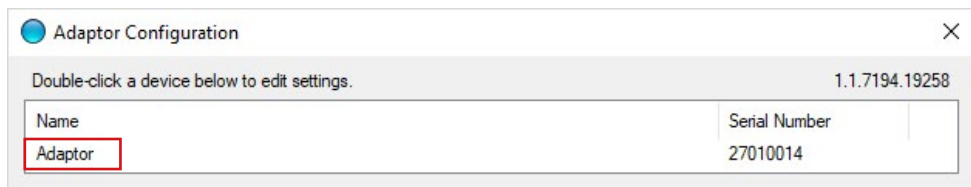
[www.merushop.org/software/moozipcadapter](http://www.merushop.org/software/moozipcadapter)

Once installed the software is called 'Adaptor Configuration'



## Connect To Your Adapter:

Run the software and connect your MERU PC adapter. It should appear on the list.



Double click to open

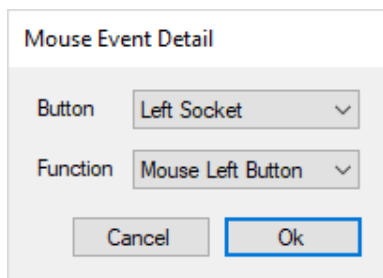
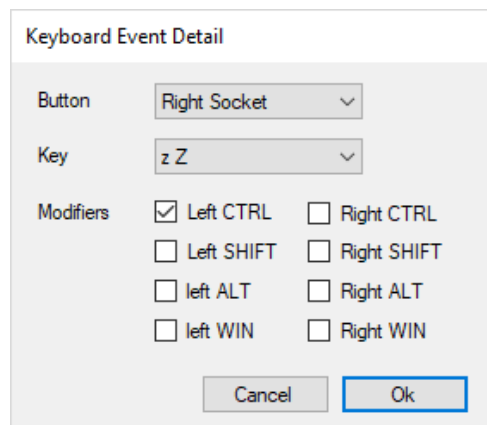
## Navigating the Software:

There are 3 tabs. Keyboard, Mouse and wireless button, where you can change the settings of your MERU PC Adapter.

### Keyboard & Mouse -

Allows you to add a keyboard or mouse event to your switches.

For example "Windows Key + Plus sign", or "Left click".

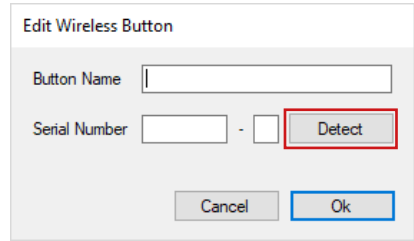


## Add Wireless Button:

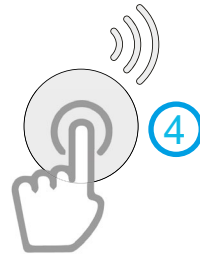
You can assign a wireless switch to your Adapter.

- 1 Connect the Adapter to your PC.
- 2 Navigate to the 'Wireless Buttons' tab.
- 3 Select 'Add' to connect a Wireless Switch. Press 'Detect'.
- 4 Click on the physical wireless switch you wish to assign.

The Serial Number of the switch will populate if successful.



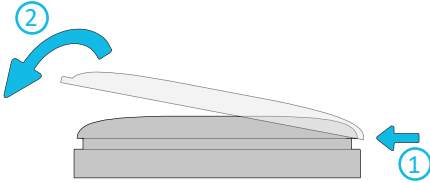
The screenshot shows a dialog box titled "Edit Wireless Button". It contains two input fields: "Button Name" and "Serial Number". The "Serial Number" field is currently empty and followed by a hyphen and another empty field. A red rectangular box highlights the "Detect" button, which is located to the right of the "Serial Number" field. A circled number "3" is placed to the right of the dialog box, indicating the step to click "Detect". At the bottom of the dialog box are "Cancel" and "Ok" buttons.



## Using The Cap:

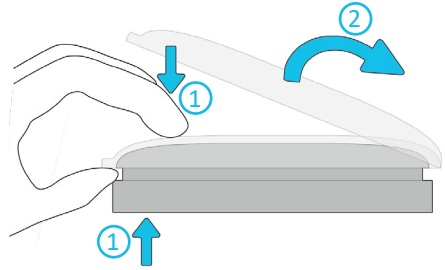
### Attach Cap

With the tab facing you, hook the cap over the switch and firmly press until clicked in place.



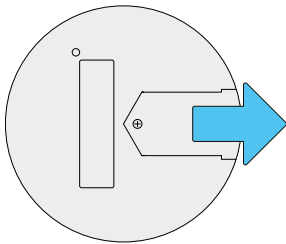
### Remove Cap

Pull the tab up whilst pushing the top point of the switch as pictured.

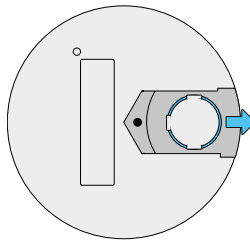


## Replace Battery:

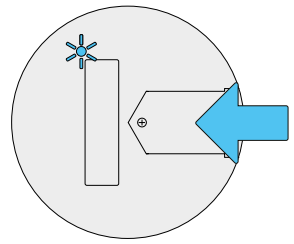
① Unscrew and slide off the battery cover.



② Replace battery. 3V CR2032.



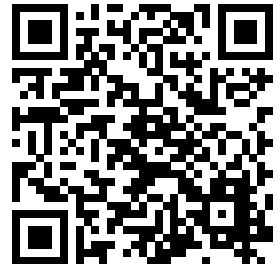
③ Replace the cover. Press the switch and battery indicator will shine.



## Download Software

Scan the QR code, or follow the link

[www.merushop.org/software/merupcadapter](http://www.merushop.org/software/merupcadapter)



## Other compatible devices

MERU PC Adapter is also compatible with some non-PC devices. Using either an “On-The-Go” USB cable or a USB hub.

MERU PC Adapter should be compatible with devices what already are compatible with a USB mouse. This could include:

- Andriod Phones
- Apple iPhones
- consoles
- Smart TVs

Product compatiblity may change on older generation devices and not all application within the device may be supported. Not all have been tested.

## About MERU

MERU is a charity that exists to improve life for children and young people with disabilities. We do this by designing equipment for use at home, at school or college, in hospital or at play. We are here to help meet a child or young person’s needs. To help fund our charitable work we manufacture and sell products such as Rokzi. **100% of the profits are used to fund our charitable services!**

## Precautions

- Disconnect the Adapter before cleaning with a damp cloth.
- Do not pull or wrap the cable around the Adapter or any associated switches/joysticks.
- Do not expose the Adapter to extreme temperatures.
- Do not open or try to take apart the Adapter.
- Do not immerse the Adapter in water.

## Warranty

This product is warranted by MERU to be free from defects in materials and workmanship for a period of 12 months from the date of delivery. If any defect is found within this period, MERU will repair, or at its discretion, replace the device without charge for materials and labour. This Warranty is subject to the provision that the device:

- Has been used solely in accordance with these instructions for the purpose for which it was intended
- Has not been subjected to misuse or accident, or been modified or repaired by any person other than someone authorised by MERU.

This warranty does not affect your statutory rights.

1 Metcalfe Ave, Carshalton SM5 4AW

+44 (0)1372 725203 | [info@meru.org.uk](mailto:info@meru.org.uk) | [www.meru.org.uk](http://www.meru.org.uk)

