

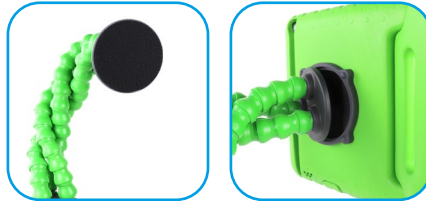


The funky, flexible
gadget stand by



Attaching a device to Flexzi

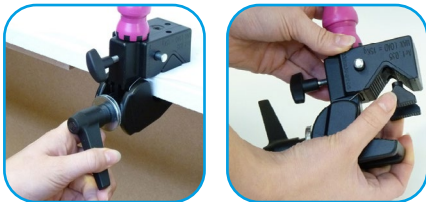
The soft Velcro should be well stuck down on the back of your device. Push the rough Velcro of the Flexzi onto the soft Velcro on your device and twist it a bit to help mate the two sides.



Flexzi Clamping Base

The clamp loosens and tightens by turning the lever.

Secure your Flexzi to a table edge using the insert shown. To fix your Flexzi to a round bar or tube, remove the insert as shown.



Using the Flexzi iPad case

The slot on the back of the case enabled access to add and remove your iPad case. The iPad should feel snug when fitted.



Cleaning the Flexzi

Grease and dirt can cause Flexzi tubes to lose stiffness. The best way to restore it is to remove the end pieces and put the tube ONLY in a dishwasher with your dishes! Clean end pieces with a damp cloth and warm, soapy water. **Do not immerse in water or use solvents.**

Precautions

- Flexzi must not support critical controls such as wheelchair controls or life support systems (such as respiratory aids).
- A risk assessment must be carried out when attaching anything to a wheelchair to ensure safety and security.
- Flexzi must not be used to mount anything hazardous such as ashtrays, fuel canisters, sharp or dangerous objects etc.
- Flexzi must not be used to position limbs or other body parts.
- Do not expose any part of the Flexzi to naked flame or excessive heat (above 60 degrees Celsius).
- Always check with an occupational therapist the positioning of any device that is to be left in place over a period of time.
- Consult your device manual for advice on its safe and correct positioning.
- Weight limit depends on the angle, position and length of the Flexzi. They will hold more weight in an upright position. Extended Flexzis hold less weight.

Weight limits of standard, unextended Flexzis:

Flexzi 1: 0.8kg, Flexzi 2: 1.6kg, Flexzi 3: 2kg.

About MERU

MERU is a charity that exists to improve life for children and young people with disabilities. We do this by designing equipment for use at home, at school or college, in hospital or at play. We are here to help meet a child or young person's needs. To help fund our charitable work we manufacture and sell products such as Rokzi. **100% of the profits go to MERU!**

Warranty

Every Flexzi is warranted by MERU to be free from defects in materials and workmanship for a period of 12 months from the date of delivery. If any defect is found within this period, MERU will repair, or at its discretion, replace the device without charge for materials and labour. This warranty is subject to the provision that the device:

- has been correctly installed
- has been used solely in accordance with these instructions for the purpose for which it was intended
- has not been subjected to misuse or accident, or been modified or repaired by any person other than someone authorised by MERU.

This warranty does not affect your statutory rights.

1 Metcalfe Ave, Carshalton SM5 4AW

+44 (0)1372 725203 | info@meru.org.uk | www.meru.org.uk

